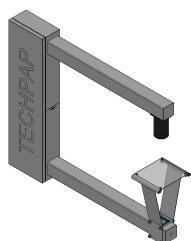


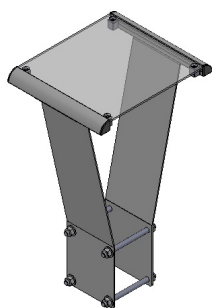
2D ON-LINE FORMATION SENSOR

PAPER AND BOARD FORMATION SENSOR



The Device

The measuring head assembly is a ruggedly built U frame designed to fit from the side of the web. This U frame is composed of a central support to hold the cooling controls and to provide structural support. Two anodised aluminium tubes are attached to the U central structure, one side is used for the camera mount and the other side for illumination stroboscope mount. The measuring head assembly can, e.g., be installed on a bracket before the finish reel on the back side of the PM or just in front of a coater with the measuring area about 70 cm from the sheet edge. Emitting and receiving heads are cooled with instrumentation air (no dust nor oil). An electrical control unit is mounted inside the head assembly so that the device can be installed easily. The connexion to the PC in the control room is made via RJ45 standard network cable.



The 2D On-Line Formation Sensor from Techpap is the state-of-the-art solution to replace traditional evaluation of formation of papers and boards, done visually in the laboratory by skilled analysts, a slow, non-quantitative and oldfashioned subjective method.

A good sheet formation is the key to optimal performance and physical characteristics of paper and board, leading to high product quality, PM runability and reduced waste. To evaluate sheet formation, the paper maker needs to have good visual control, as well as maximum information about floc size distribution, floc anisotropy, periodic marks and trends.

The user friendly software for operation of the Formation Sensor controls the automatic generation of digital look-through images, which are analyzed by a powerful algorithm providing instantaneously objective numeric test results and trend curves.

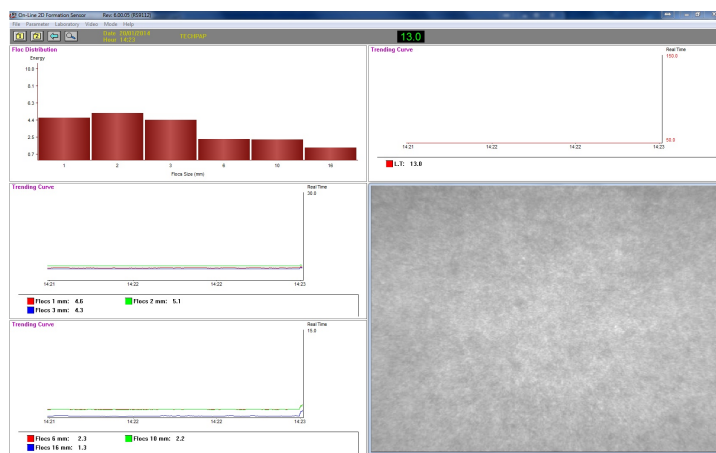
The On-Line Formation Sensor is available also as a laboratory version : they share the same measuring hardware and software, providing exactly the same results, enabling so the dreamed common language to link smoothly, clearly and objectively Q.C. and R&D.

The basis weight range is very large, from 5 g/m² up to 600 g/m² for tissue, printing & writing, testliner and virgin board, even dyed, and up to 1000 g/m² for certain grades of white paper and measurements are accurately carried up to 1500 m/min web speeds .

Friendly User Interface

The Formation Software runs in a PC under Windows OS, in a user friendly single window which contains all controls and displays all test results, including statistics, trend curves, histogram of floc distribution and live image of the measured sheet.

Simple parameter settings, simple data transfer to spreadsheet, ASCII, remote database or DCS using an OPC server or 4-20 mA signal.



 **techpap**
innovation for paper

TECHPAP SAS

CS 90251 - 38044 Grenoble cedex 9

Tél. +33 (0)4 76 51 74 75 - Fax +33 (0)4 76 42 05 04

www.techpap.com - techinfo@techpap.com