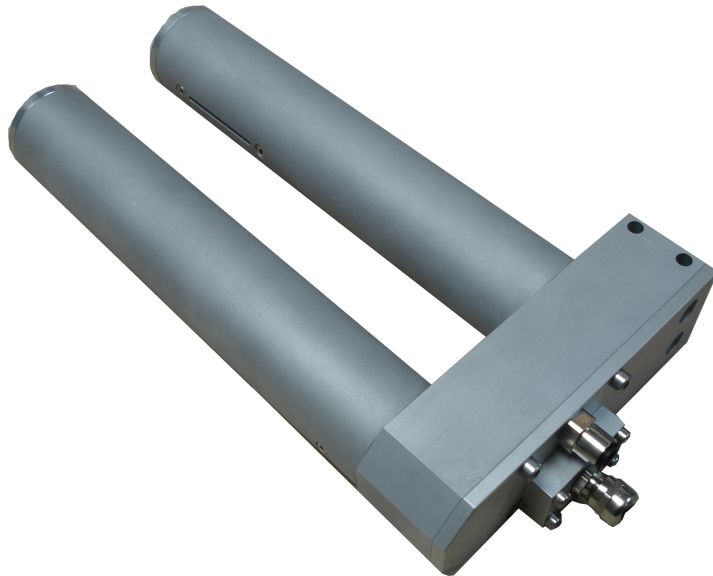


DAR 4 & 5

RANDEINRISS-DETEKTOR



Edge cracks cause many problems and can create huge costs in paper machines, calenders, winders, coating machines, print machines, aso. The **DAR4** can help you to detect edge cracks and to find out where they are coming from.

This analogic sensor uses modern and safe optoelectronic components especially selected, detecting any crack, also folded edges of a moving web, thin or thick, dark or clear.

Strongly built, the housing of the **DAR4** is designed in a massive block of aluminium, equipped with two parallel tubes. The detection area, between the tubes is 36 mm wide : as long as the web moves in this area, the **DAR4** will detect edge cracks, even very little ones (minimum 2 x 0.4 mm) at high speed (3000 m / mn).

Detection head and electronics are separated by a 2 meter cable. As the detection head is small and light, it can be mounted on trimmer-knives heads of rewinders or in narrow locations. The electronic unit is equipped with a display panel: eight indicator lights inform the operator about the position of the sensor with regard to the edge, and make positioning easy. Four other lights give information about running and crack detection. A counter displays the total number of detected cracks since the last reset.



TECHPAP SAS

CS 90251 - 38044 Grenoble cedex 9

Tél. +33 (0)4 76 51 74 75 - Fax +33 (0)4 76 42 05 04

www.techpap.com - techinfo@techpap.com

DAR 4 & 5



DAR 5

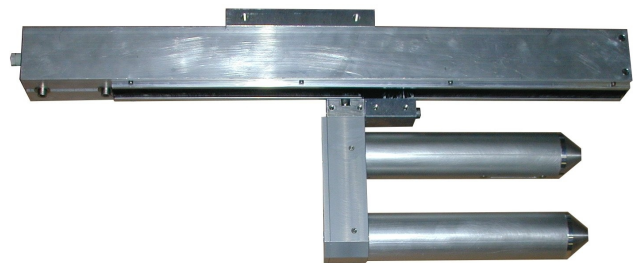
This is a motorised bracket to position or retract automatically the **DAR 4** detection head. In case of web break the head retracts or stays in stand-by position. The bracket is very compact (60 x 60 mm tube), length is on request.

Inside the electronic unit there are several outputs available : it is possible to connect directly a marker, or it is possible to transfer complete information about running, web break and crack detection to a central computer system. To start up: connect the supply and it runs, even if you hold it by hands. Tests have shown that **DAR4** detects better as most camera systems.

No radiation, no laser beam, no complicated optics or settings, no moving part, no wear part, no influence by external source or sunlight, no pin-holes detection, easy to install, easy maintenance, easy connections and high performances.

The **DAR4** can be used on any web quality : cigarette paper, newspaper, coating base, translucent paper, corrugated and liner. The **DAR4** can also be involved to control carrier ropes and will detect fraying. The **DAR4** signals can be used in addition to a web break supervisor system

The **DAR4** mounted on trimmers allows you to manufacture reels without cracks, warranted!



Weight & Dimension	1.5 kg, standard length 250 mm, tubes 50 mm
Fixation	By M8 bolts on upper or lateral side
Supply	230 v, 50/60 Hz, 10 W (on request 115 v, or 12 v DC) Fuse 0.1 A, T
Instrumentation Air	¼ ", 2 bars, 3 m3 / H to keep optics clean
Outputs	2 relay contacts (max 250 v, max 1 A) for marker and web break 4 open collectors to 0 for OK, error, crack and web break (max 12 v, max 0.1 A)
Detection	By infrared light, minimum crack about 2 x 0.4 mm, zone 36 mm wide
Settings	3 ranges (150-600, 300-1200, 600-3000 m/mn)
Speed	3 ranges
Sensitivity	3 ranges
Marker Duration	0.5 – 10 seconds
Display	8 positioning lights and OK, error, crack lights, counter, reset and test buttons The housing is splashproof, but the optical apertures are open
Temperature	60 °C max, beyond use the Air-vortex cooler (in option)