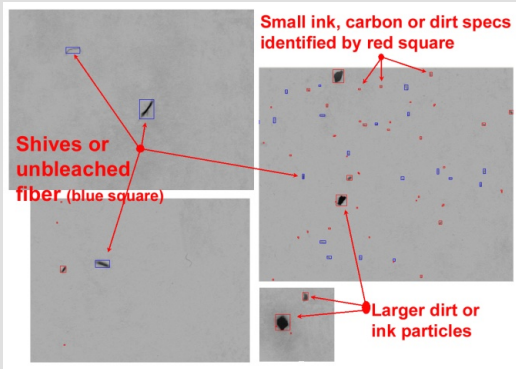


# PULP INSPECTOR

## DIRT & SHIVES MODULE

THE DIRT & SHIVES MODULE PERFORM ANALISES THE WHOLE PULP FLOWING THROUGH A MEASURING CELL AND COUNTS ALL IMPURITIES TYPICALLY FOUND IN PULPS AS DIRT DOTS AND SHIVES



### DIRT & SHIVES MODULE

This module is based on the well known Simpatic dirt counter developed by CTP.

15 years of experience in on-line dirt counting for deinking & recycling pulps as well for paper manufacturer. With a resolution from 50µm to 100µm the system takes up to 30 images per seconds with digital IP camera

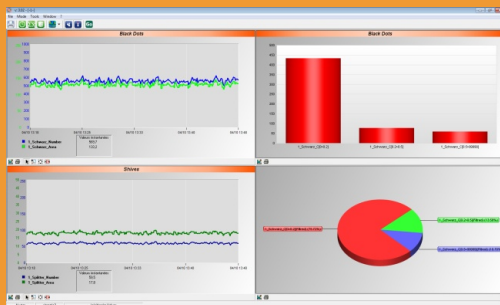
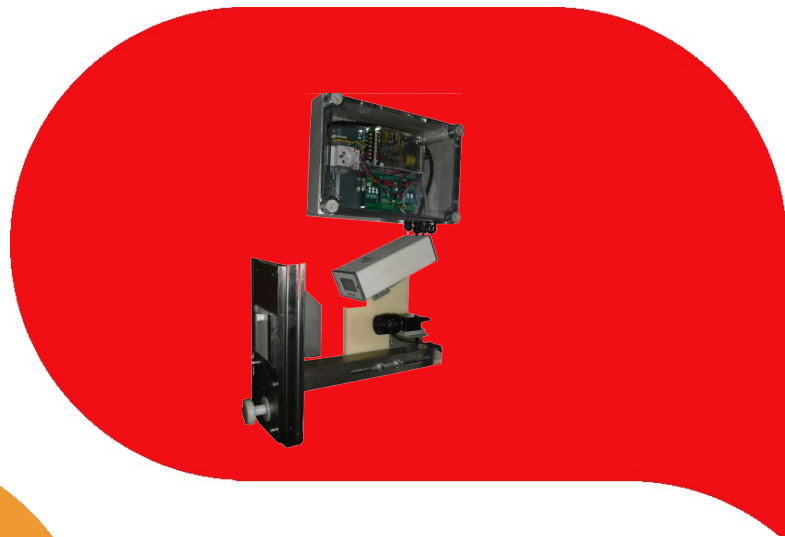
It uses the same sampler as basic Pulp Inspector module

### Results

The simpatic software perform on the fly analysis to detect all contrasted contaminants in the pulp flow such as:

- black contrasted dirt
- white contrasted elements
- shives discriminated by shape ratio detection

All those elements are classified by size classes & surface



### XTREND INTERFACE

Techpap has developed a graphic interface

- Multi users (through TCP/IP)
- Multi sensor

Each workspace configurable with:

- Trend curves
- Histogram
- Sectors ....