

# PULP INSPECTOR

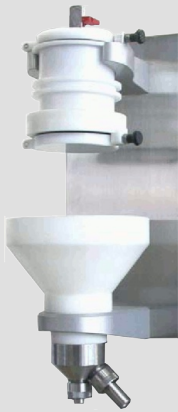
## DRAINAGE MODULE (CSF)

ISO 5267/2



The drainage CSF module complies to the standardized test method Canadian Freeness

- Tested by Paprican
- Drainage chamber made of lightweight & rugged Polyacetal
- Compensation for temperature correction
- Compensation for consistency correction



STANDARD  
AUTOMATIZED  
CSF METHOD

### PI CSF

This module is an automatized standard Canadian Freeness Measurement, with automatic temperature & weight compensation.

It delivers freeness measurement & trends through Xtrend and have an automatic cleaning cycle to perform 24/7 service to the mill.

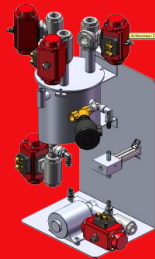
This stand alone unit can be combined with:

- The Basic Pulp inspector
  - The Fiber Analyzer Module (Morfi)
- All modules use the same samplers

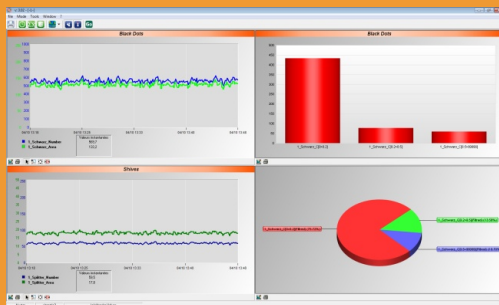
### PI Dillution

Techpap has developed a dillution module to adjust automatically the sample consistency provided by sampler to have a precise value to run the CSF measurement.

The PI Dillution System uses an optical device to perform an accurate adjust of the pulp sample delivered to CSF module.



CONSISTENCY  
ADJUSTMENT



### XTREND INTERFACE

Techpap has developed a graphic interface

- Multi users (through TCP/IP)
- Multi sensor

Each workspace configurable with:

- Trend curves
- Histogram
- Sectors